

Superlux[®]

PRA535NC
NOISE-CANCELING HANDHELD
DYNAMIC MICROPHONE

Contact

Marketing and sales

Superlux Taiwan

+886-2-26931323

sales@superlux.com.tw

support@superlux.com.tw

Manufacturing & logistics

Superlux Enterprise

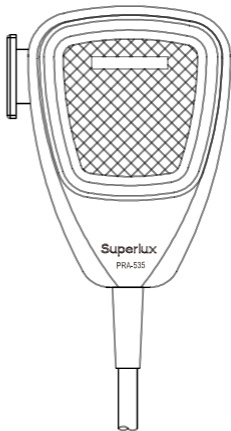
Development (Shanghai) Co., Ltd.

PRA535NC

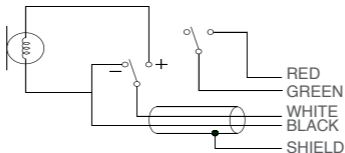
NOISE-CANCELING HANDHELD DYNAMIC MICROPHONE

GENERAL DESCRIPTION

PRA-535NC is a noise-canceling handheld dynamic microphone. Its transducer features high reliability and advanced acoustic construction design; this makes it effective in resisting the ambient noise so as to perform a high level of intelligibility. PRA-535NC is an ideal candidate for speech communication in noisy and traveling environments such as in vehicles, vessels and civil aircrafts, etc.



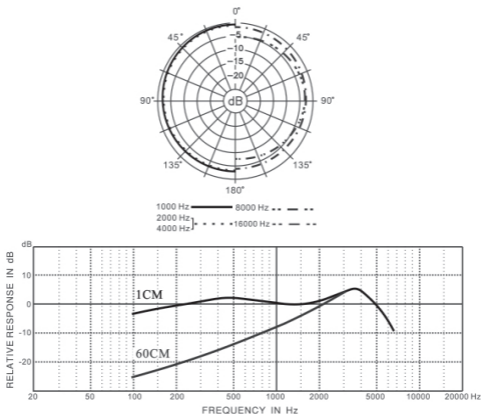
WIRING DIAGRAM



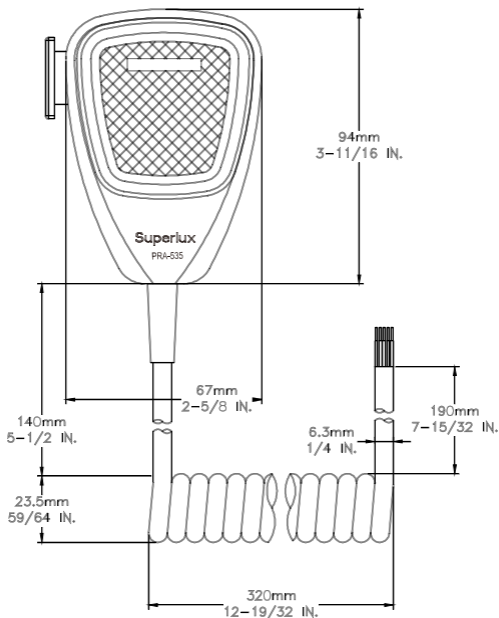
FEATURES

- Excellent attenuation of the ambient noise.
- Excellent in clearness of speech articulation and intelligibility.
- Premium durability to high temperature, high humidity, vibration and dropping.
- Corrosion-resistant body (against oil, acid and alkali).
- Press-to-talk switch, operation life for 200,000 times of use.

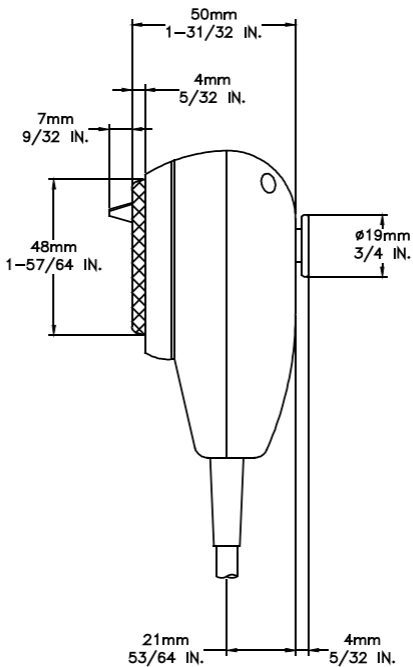
PRA535NC FREQUENCY RESPONSE



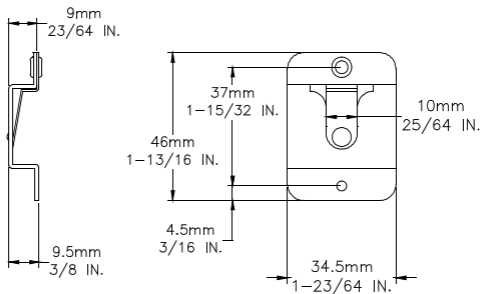
MICROPHONE DIMENSION DIAGRAM



Unit: mm/inch



Unit: mm/inch



Unit: mm/inch

Specifications

*Note: Specifications are subject to change.

Type	Noise-Canceling Dynamic
Frequency Response	100 - 5000 Hz
Sensitivity	66 dBV/Pa (0.5 mV/Pa)
Rated Impedance	200Ω
Operation Temperature Range	-40°C ~ 74°C (-40°F ~ 165°F)
Switch Type	Press - to - talk
Cable	Φ 6.3 mm x 3.4 M (Φ1/4" x 11 ft)
Weight	250g (8.8oz.) (cable included) bracket 20 g (0.7oz.)

*1Pa=10 microbars=94dB SPL

SAFETY PRECAUTIONS

Safety symbols-“WARNING” AND “CAUTION”- and messages described below are used in this manual to prevent bodily injury and property damage which could result from mishandling. Before operating your product, read this manual first and understand the safety symbols and messages so you are thoroughly aware of the potential safety hazards.



WARNING: Indicates a potentially hazardous situation which, if mishandled, could result in death or serious personal injury.



CAUTION: Indicates a potentially hazardous situation which, if mishandled, could result in moderate or minor personal injury, and/or property damage.

WARNING



- Do not expose the unit to rain or an environment where it may be splashed by water or other liquids, as doing so may result in fire or electric shock.
- Do not attempt to modify this product. Doing so could result in personal injury and/or product failure.

CAUTION



- Do not subject to extreme force and do not pull on the cable or failures may result.
- Keep the device dry and avoid exposure to extreme temperatures and humidity.



LIMITED WARRANTY

Superlux Enterprise warrants all materials and workmanship under use as instructed by the user's manual of this product for a period of one year from the original date of purchase. Warranty period might be different by each area. Please contact your local dealer for more information. If any defects are found in the materials or workmanship or if the product fails to function properly during the applicable warranty period, Superlux Enterprise, at its option, will repair or replace the product. This warranty applies only to equipment sold and delivered by Superlux Enterprise's authorized distributors or dealers. However, the following are not covered: Damage caused by accident, misuse, abuse, product modification or neglect; damage occurring during shipment; damage resulting from failure to follow instructions contained in your Instruction manual; damage resulting from the performance of repairs by someone not authorized by Superlux; claims based upon any misrepresentations by the seller; any Superlux product on which the serial number has been defaced, modified or removed. Service and repairs of Superlux products are to be performed only at a factory-authorized facility or authorized distributors or dealers. Unauthorized service, repairs, or modification will void this warranty. To obtain repairs under warranty, you must have a copy of your sales receipt from the authorized Superlux dealer where you purchased the product. It is necessary to establish purchase date and determine whether your Superlux product is within the warranty period. To obtain factory authorized service, please contact authorized distributors, dealers or mail to support@superlux.com.tw.

THIS DEVICE COMPLIES WITH PART 15 OF THE FCC RULES CLASS B. OPERATION IS SUBJECT TO THE FOLLOWING TWO CONDITIONS:

- (1) THIS DEVICE MUST NOT CAUSE HARMFUL INTERFERENCE, AND
- (2) THIS DEVICE MUST ACCEPT ANY INTERFERENCE RECEIVED INCLUDING INTERFERENCE THAT MAY CAUSE UNDESIRE OPERATION. SUITABLE FOR HOME OR OFFICE USE.