

# HD681 Series

**Semi-Open Professional  
Monitor Headphones**

The HD681 series headphones offer 3 distinctive sound profiles, each with its own character :

The HD681 features an exceptionally deep low frequency, the HD681F has a flat extended frequency response, and the HD681B has an excellent balanced character, and powerful bass punch.

As for the sound image presented by these headphones, the HD681 gives you the feeling of actually being on stage with the artists while the HD681F makes you feel as if you sitting on the front row and the HD681B puts you in the middle of the concert hall, enjoying a deep, rich sound. These three headphones also deliver excellent balance and clarity.

The ergonomically-designed vinyl ear pieces combined with the lightweight and self-adjusting headband of these headphones make them very comfortable. Whether you're monitoring, tracking, mixing, or just listening to an MP3 or other audio source, you can expect comfort and sonic accuracy from your HD681 series headphones.

**Superlux<sup>®</sup>**  
舒伯乐

# HD681 Series

## Professional Monitor Headphones

**Superlux®**  
舒伯乐

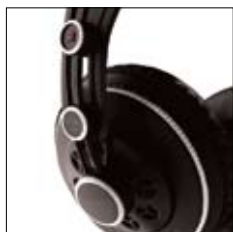
### 3 sound profiles to suit all tastes



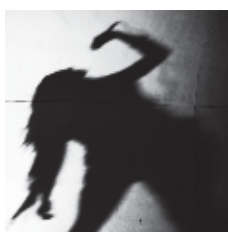
HD681



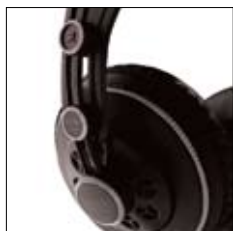
- **HD681**  
Deep low frequency  
“On stage” sound, perfect for enjoying the beauty of classical music & other large ensembles.



HD681F



- ◎ **HD681F**  
Flat extended frequency response  
“Front row” sound image, great for pop music and capturing that sweet vocal sound.



HD681B



- **HD681B**  
Balanced character, and powerful bass punch  
“In hall” feel, great for enjoying rock music and similar exciting performances.

### Features

Accurate and detailed sound greatly enhances your listening experience.

High efficiency and wide dynamic range.

Durable construction allows it to be twisted for use as a single ear headphone.

Self-adjusting headband for great fit and maximum comfort.

Single-sided, straight cable.

Outstanding quality and value.

Environmentally friendly packaging, good for displays and easy to store.

### Specifications

Type  
Dynamic

Frequency Response  
10 to 30,000Hz

Acoustic Design  
Semi-open

Driver  
Φ50mm, neodymium

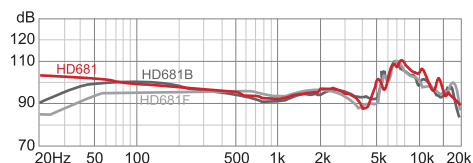
Rated Impedance  
32Ω @ 1KHZ  
Copper-coated aluminum wire

Sensitivity  
98dB SPL, 1mW

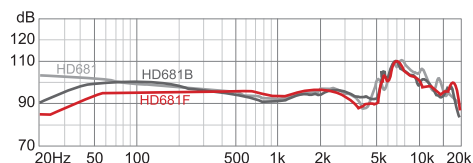
Total Harmonic Distortion  
<0.25% at 1KHz/1V

Maximum Power  
300mW

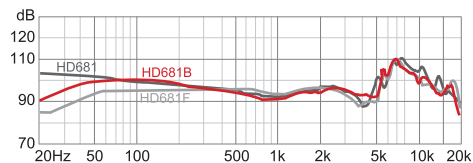
### HD681 series frequency response



Both the HD681 & P-brand HP890 have a similar curve, presenting a bright and clear sound. When playing classical music, the HD681 will surprise you with its breadth, clarity and dynamic presence.



Both the HD681F & A-brand AD500 have a similar curve. The HD681F delivers a sweet sound, just as if the singer was standing right in front of you.



Both the HD681B & A-brand K240 Studio have a similar curve. The HD681B optimizes a powerful bass and balanced tone, and it will be difficult to resist the urge to dance to the rhythm from your headphones.

### Cable

2.5M (8.2 ft), straight

### Connectors

Φ 3.5mm and Φ 3.5 to Φ 6.3mm adapter  
Gold-plated connections

### Head Band Pressure

Approx. 3.5N

### Net Weight

276 g (9.75 oz)

### Furnished Accessories

3.5/6.3mm Plug adapter  
Storage pouch

### Optional Accessories

EPK601:  
Ear Pad Kit incl. a pair of ear pads and a pair of foam disks

\*FR charts shown above are test results determined by China Standard IEC318 ear simulation.